

Resource Recovery Learning Centre

Shoalhaven City Council



DA DRAWING LIST		
NO.	TITLE	REVISION
DA-00-01	COVER SHEET	01
DA-00-02	EXISTING SITE PLAN	01
DA-00-03	SITE ANALYSIS PLAN	01
DA-00-04	DEMOLITION PLAN	01
DA-00-05	SHADOW DIAGRAMS	01
DA-00-06	MATERIALS BOARD	01
DA-20-01	3D IMAGES	01
DA-21-01	GROUND FLOOR PLAN	01
DA-21-02	ROOF PLAN	01
DA-22-01	BUILDING ELEVATIONS	01
DA-22-02	BUILDING ELEVATIONS	01
DA-23-01	SITE SECTIONS	01
DA-23-02	BUILDING SECTIONS	01

00-06_MATERIAL LEGEND	
CODE	DESCRIPTION
CB-01	Concrete Block
CF-01	Concrete Floor
CPT-01	Carpet Tile
CS-01	Canopy Shading
EF-01	External Façade
GW-01	Gabion Wall
RF-01	Metal Sheetting
RF-02	Polycarbonate Sheetting
SG-01	Steel Grating
TC-01	Timber Columns (Recycled)
TF-01	Timber Flooring (Recycled)

GENERAL NOTES

DO NOT SCALE FROM THIS DRAWING

CONFIRM ALL DIMENSIONS AND SETOUTS ON SITE PRIOR TO MANUFACTURE & INSTALLATION

ALL WORK IN ACCORDANCE WITH RELEVANT AUSTRALIAN STANDARDS

TO BE READ IN CONJUNCTION WITH ENGINEERS DOCUMENTS.

KEY PLAN

LEGEND

01	07/06/23	Development Application
Rev	Date	Description

Sydney Level 2, 79 Myrtle St
Chippendale 2008
Nominated Architect: Gerard Reinmuth 6629
T 02 9698 2198
F 02 9698 2353

Hobart 181 Elizabeth St
Hobart 7000
Nom. Architect TAS: Scott Balmforth CC1041T
Registered Architect VIC: Scott Balmforth 16263
T 03 6234 6372
F 03 6231 4939

TERROIR

Project:
Shoalhaven City Council
Resource Recovery Learning Centre
120 Flatrock Road, Mundamia NSW
Drawing Description:
COVER SHEET

Drawn by: AN Checked by: GR Scale: @A1

PROJECT NO: 22204	DWG NO: DA-00-01	REV NO: 01
----------------------	---------------------	---------------

Drawing Status: DEVELOPMENT APPLICATION



SITE BOUNDARY

GENERAL NOTES

DO NOT SCALE FROM THIS DRAWING

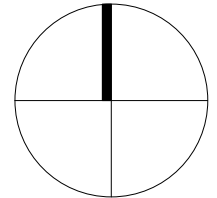
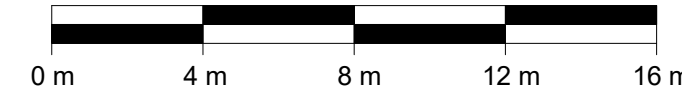
CONFIRM ALL DIMENSIONS AND SETOUTS ON SITE PRIOR TO MANUFACTURE & INSTALLATION

ALL WORK IN ACCORDANCE WITH RELEVANT AUSTRALIAN STANDARDS

TO BE READ IN CONJUNCTION WITH ENGINEERS DOCUMENTS.

KEY PLAN

LEGEND



— SITE BOUNDARY

TREES (DEAD) TO BE REMOVED
REFER TO ARBORIST REPORT FOR FURTHER DETAIL

TREES TO BE REMOVED
REFER TO ARBORIST REPORT FOR FURTHER DETAIL

BUILDINGS TO BE RELOCATED

INFERRED EXTENT OF LANDFILL
REFER TO GEOTECHNICAL REPORT FOR FURTHER DETAIL

Rev	Date	Description
-----	------	-------------

Sydney Level 2, 79 Myrtle St
Chippendale 2008
Nominated Architect: Gerard Reinmuth 6629
T 02 9698 2198
F 02 9698 2353

Hobart 181 Elizabeth St
Hobart 7000
Nom. Architect TAS: Scott Balmforth CC1041T
Registered Architect VIC: Scott Balmforth 16263
T 03 6234 6372
F 03 6231 4939

TERROIR

Project:
Shoalhaven City Council
Resource Recovery Learning Centre
120 Flatrock Road, Mundamia NSW
Drawing Description:
EXISTING SITE PLAN

Drawn by: AN Checked by: JL Scale: 1:200 @ A1

PROJECT NO:	DWG NO:	REV NO:
22204	DA-00-02	01

Drawing Status: DEVELOPMENT APPLICATION

01 ON-SITE FACTORY

02 ON-SITE GENERATOR

03 LARGE EUCALYPTUS TREES

04 BUY-BACK CENTRE (NORTH OF SITE NOT SHOWN IN PLAN)

05 ROAD CONDITION TOWARDS BUY-BACK CENTRE

06 ROAD ENTRY TO RRLC

04



TREE (DEAD)

TREE 08

TREE 09

05

CHAIN LINK FENCE

OVERFLOW
CARPARK

LOT 1
DP1018193

TREE 07

TREE 06

TREE 05

TREE 04

TREE 03

TREE 01

TREE 02

06

FLATROCK ROAD

01

07

08

07 HEADWALL

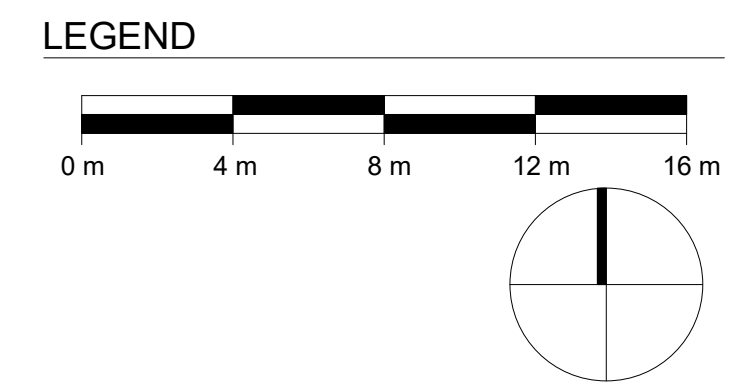
08 OFFICE BUILDINGS

Date Plotted: 30/06/2023 4:25:31 PM

File Path: C:\Users\Nguyen\Documents\22204_RRLC_nguyen2\RCR.rvt



GENERAL NOTES
DO NOT SCALE FROM THIS DRAWING
CONFIRM ALL DIMENSIONS AND SETOUTS ON SITE PRIOR TO MANUFACTURE & INSTALLATION
ALL WORK IN ACCORDANCE WITH RELEVANT AUSTRALIAN STANDARDS
TO BE READ IN CONJUNCTION WITH ENGINEERS DOCUMENTS.
KEY PLAN

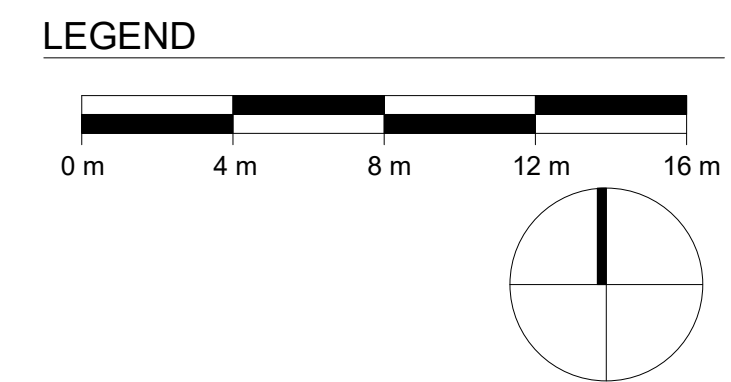
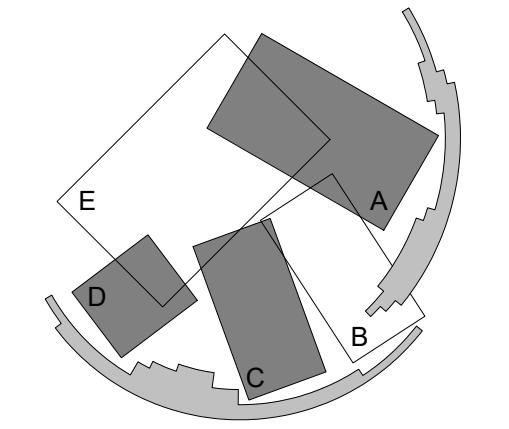


01	07/06/23	Development Application
Rev	Date	Description
Sydney Level 2, 79 Myrtle St Chippendale 2008 Nominated Architect: Gerard Reinmuth 6629 T 02 9698 2198 F 02 9698 2353		
Hobart 181 Elizabeth St Hobart 7000 Nom. Architect TAS: Scott Balmforth CC1041T Registered Architect VIC: Scott Balmforth 16263 T 03 6234 6372 F 03 6231 4939		
TERROIR		
Project: Shoalhaven City Council Resource Recovery Learning Centre 120 Flatrock Road, Mundamia NSW		
Drawing Description: SITE ANALYSIS PLAN		
Drawn by: AN Checked by: JL Scale: 1 : 200@A1		
PROJECT NO: 22204	DWG NO: DA-00-03	REV NO: 01
Drawing Status: DEVELOPMENT APPLICATION		



GENERAL NOTES
DO NOT SCALE FROM THIS DRAWING
CONFIRM ALL DIMENSIONS AND SETOUTS ON SITE PRIOR TO MANUFACTURE & INSTALLATION
ALL WORK IN ACCORDANCE WITH RELEVANT AUSTRALIAN STANDARDS
TO BE READ IN CONJUNCTION WITH ENGINEERS DOCUMENTS.

KEY PLAN



- SITE BOUNDARY
- TREES (DEAD) TO BE REMOVED
REFER TO ARBORIST REPORT FOR FURTHER DETAIL
- TREES TO BE REMOVED
REFER TO ARBORIST REPORT FOR FURTHER DETAIL
- BUILDINGS TO BE RELOCATED

OVERFLOW
CARPARK

FLATROCK ROAD

REFER LANDSCAPE PLAN
FOR DETAILED PLANTING AND ARRANGEMENT

SITE BOUNDARY

01	07/06/23	Development Application
Rev	Date	Description

Sydney Level 2, 79 Myrtle St
Chippendale 2008
Nominated Architect: Gerard Reinmuth 6629
T 02 9698 2198
F 02 9698 2353

Hobart 181 Elizabeth St
Hobart 7000
Nom. Architect TAS: Scott Balmforth CC1041T
Registered Architect VIC: Scott Balmforth 16263
T 03 6234 6372
F 03 6231 4939

TERROIR

Project:
Shoalhaven City Council
Resource Recovery Learning Centre
120 Flatrock Road, Mundamia NSW

Drawing Description:
DEMOLITION PLAN

Drawn by: AN Checked by: JL Scale: 1:200 @ A1

PROJECT NO: 22204	DWG NO: DA-00-04	REV NO: 01
----------------------	---------------------	---------------

Drawing Status: DEVELOPMENT APPLICATION

GENERAL NOTES

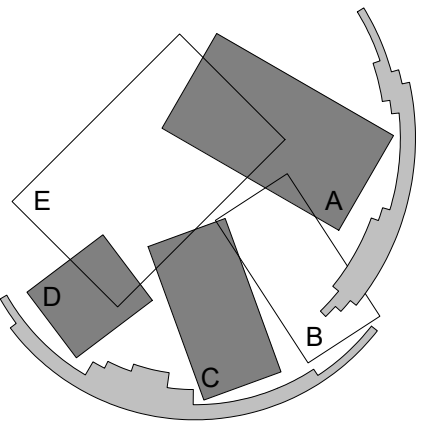
DO NOT SCALE FROM THIS DRAWING

CONFIRM ALL DIMENSIONS AND SETOUTS ON SITE PRIOR TO MANUFACTURE & INSTALLATION

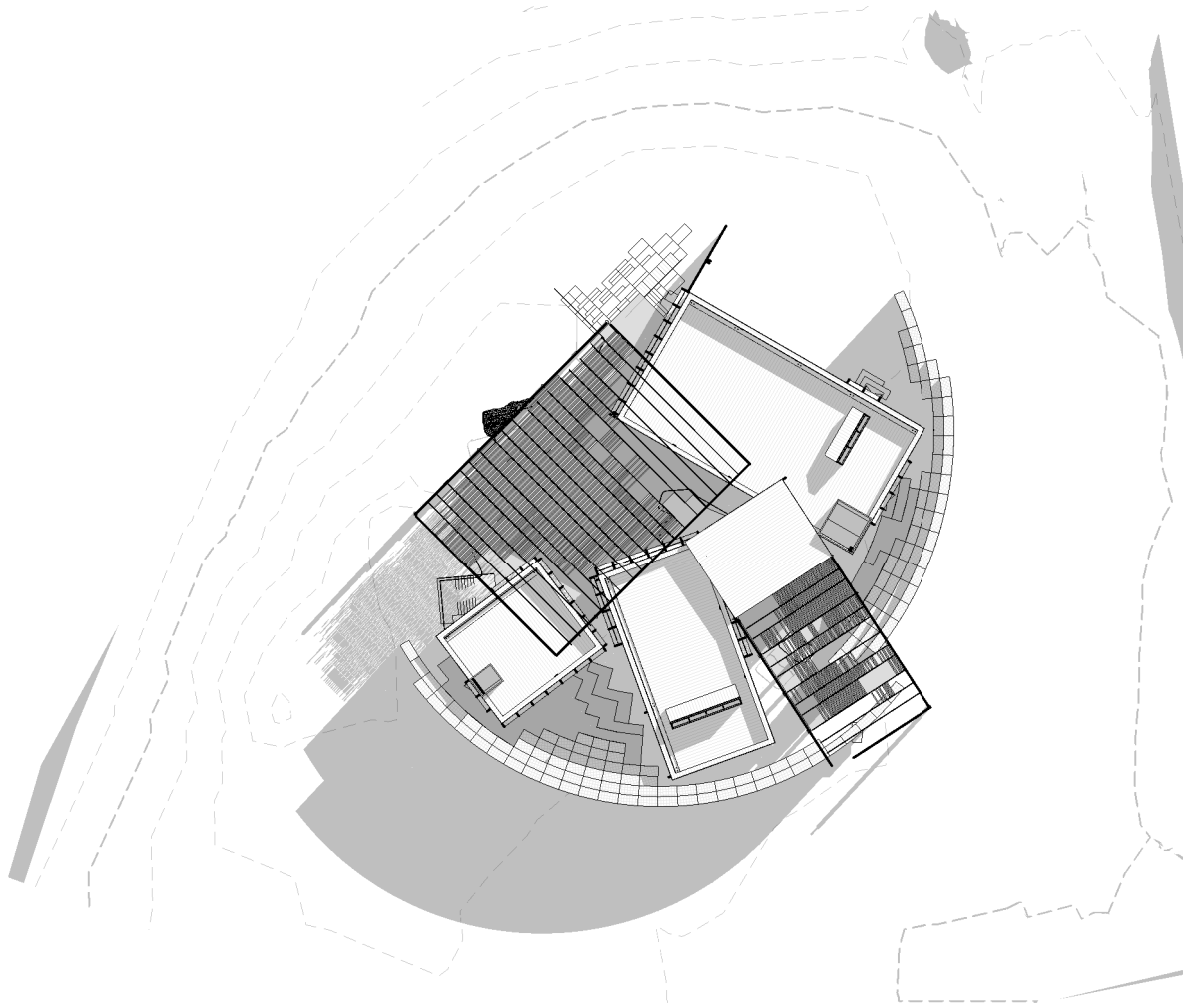
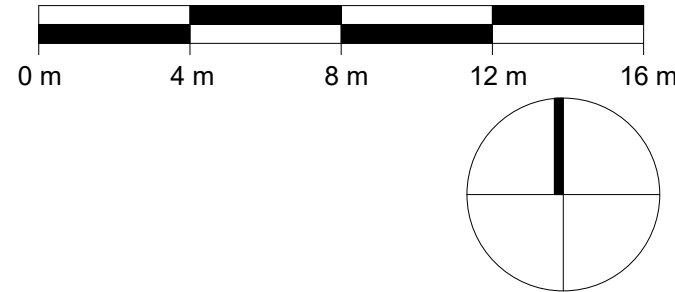
ALL WORK IN ACCORDANCE WITH RELEVANT AUSTRALIAN STANDARDS

TO BE READ IN CONJUNCTION WITH ENGINEERS DOCUMENTS.

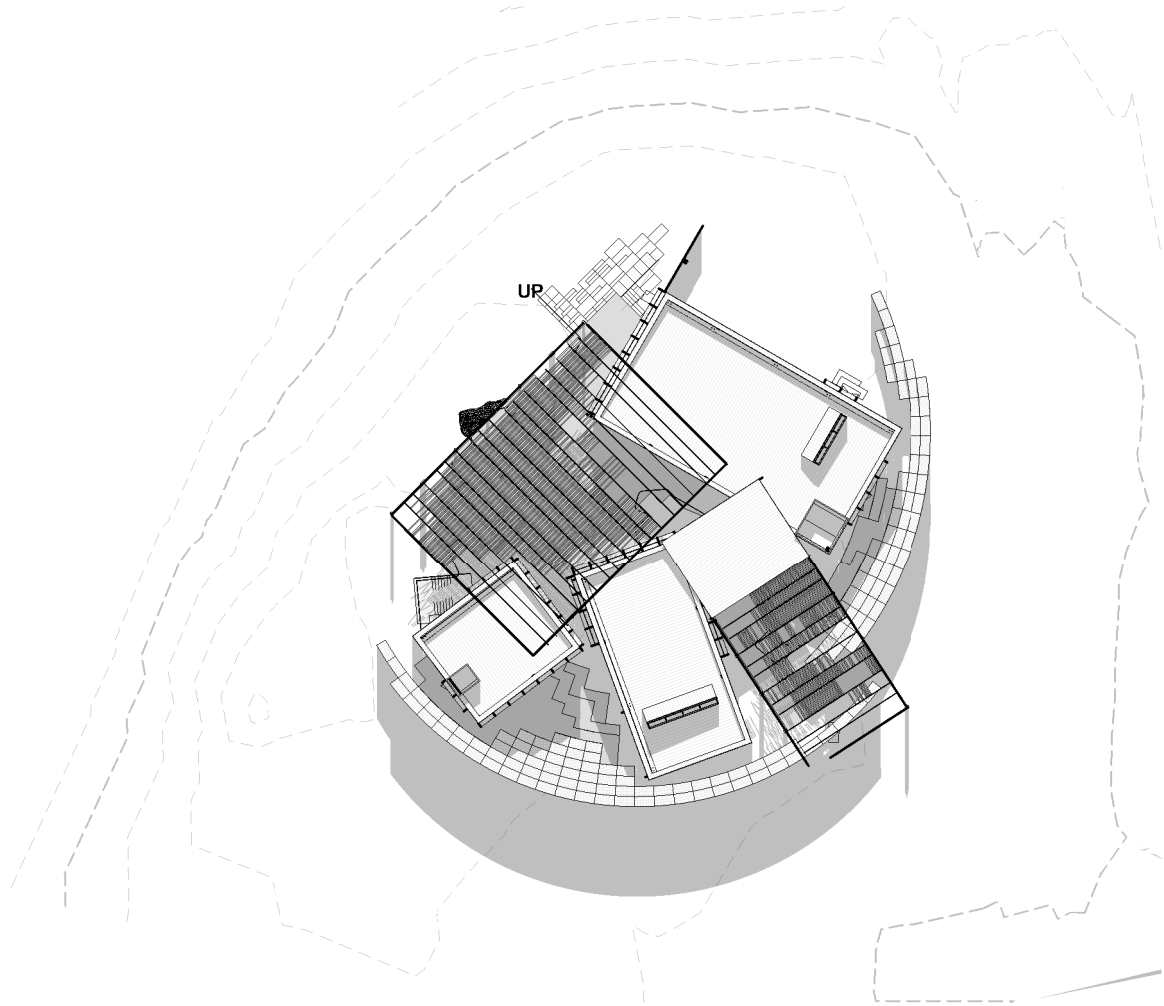
KEY PLAN



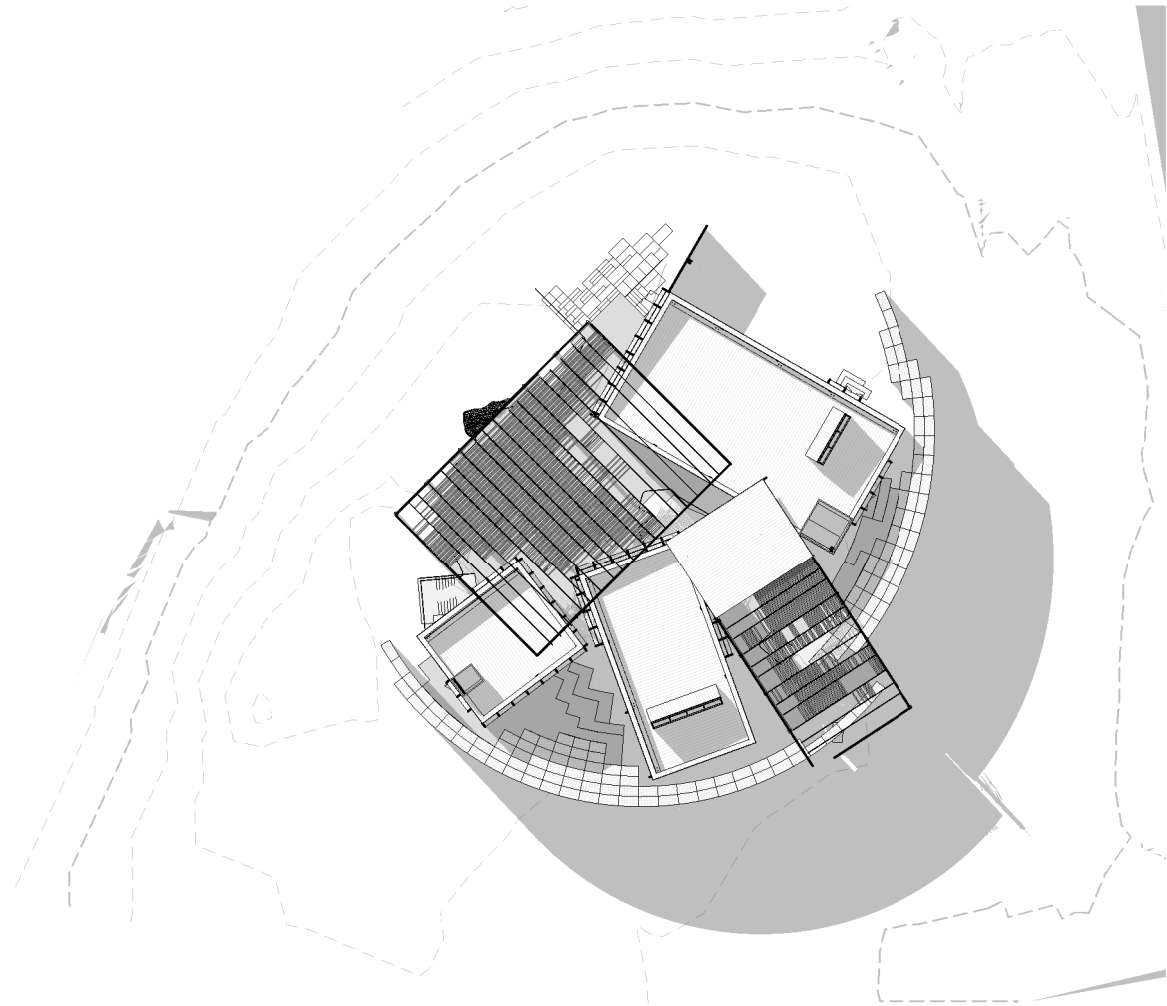
LEGEND



4 0900 June 21 - Proposed
22-01 1 : 750



5 1200 June 21 - Proposed
22-01 1 : 750



6 1500 June 21 - Proposed
22-01 1 : 750

Rev	Date	Description
-----	------	-------------

01 07/06/23 Development Application

Sydney Level 2, 79 Myrtle St
Chippendale 2008
Nominated Architect: Gerard Reinmuth 6629
T 02 9698 2198
F 02 9698 2353

Hobart 181 Elizabeth St
Hobart 7000
Nom. Architect TAS: Scott Balmforth CC1041T
Registered Architect VIC: Scott Balmforth 16263
T 03 6234 6372
F 03 6231 4939

TERROIR

Project:
Shoalhaven City Council
Resource Recovery Learning Centre
120 Flatrock Road, Mundamia NSW

Drawing Description:
SHADOW DIAGRAMS

Drawn by: AN Checked by: JL Scale: As indicated@A1

PROJECT NO: 22204	DWG NO: DA-00-05	REV NO: 01
----------------------	---------------------	---------------

Drawing Status: DEVELOPMENT APPLICATION

GENERAL NOTES

DO NOT SCALE FROM THIS DRAWING

CONFIRM ALL DIMENSIONS AND SETOUTS ON SITE PRIOR TO MANUFACTURE & INSTALLATION

ALL WORK IN ACCORDANCE WITH RELEVANT AUSTRALIAN STANDARDS

TO BE READ IN CONJUNCTION WITH ENGINEERS DOCUMENTS.

KEY PLAN



GW-01
GABION WALL

GABION BASKETS WITH CRUSHED CONCRETE, BRICK AND TILE.

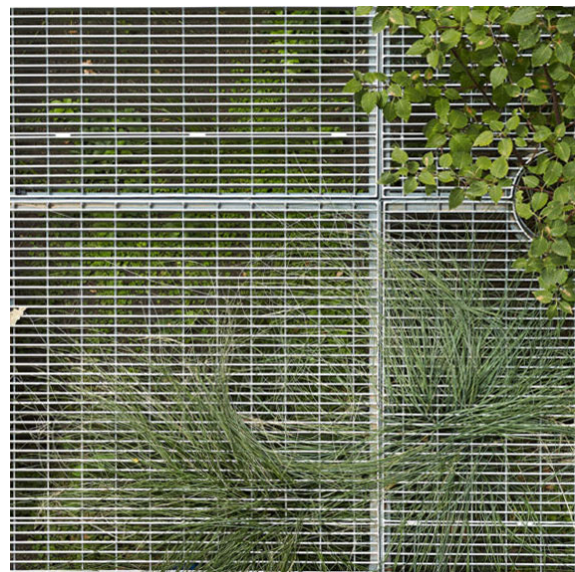
SIZING RANGE: 65MM - 250MM



TC-01
TIMBER COLUMNS

SALVAGED HARDWOOD TIMBER.

SIZING: VARIOUS LENGTHS AND PROFILES



SG-01
STEEL GRATING

SALVAGED WEBFORGE STEEL GRATING.

SPAN SIZING: 1,200MM, 1,500MM AND 1,800MM



TF-01
TIMBER FLOOR

SALVAGED HARDWOOD TIMBER FLOORING.

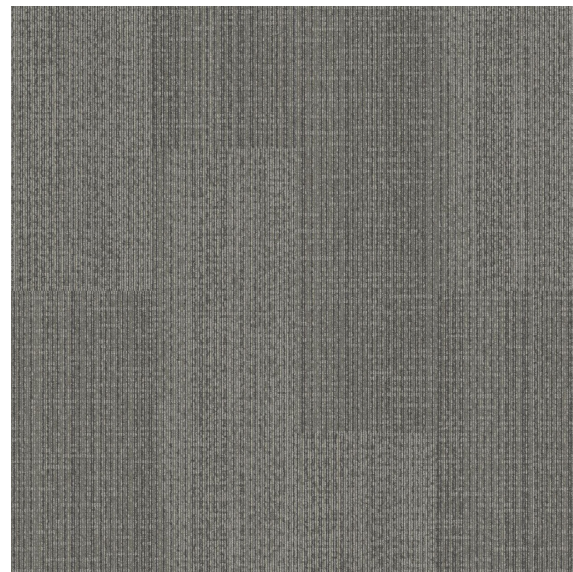
SIZING: VARIES



CF-01
CONCRETE FLOOR

LOCALLY SOURCED RECYCLED GLASS CONCRETE PANELS.

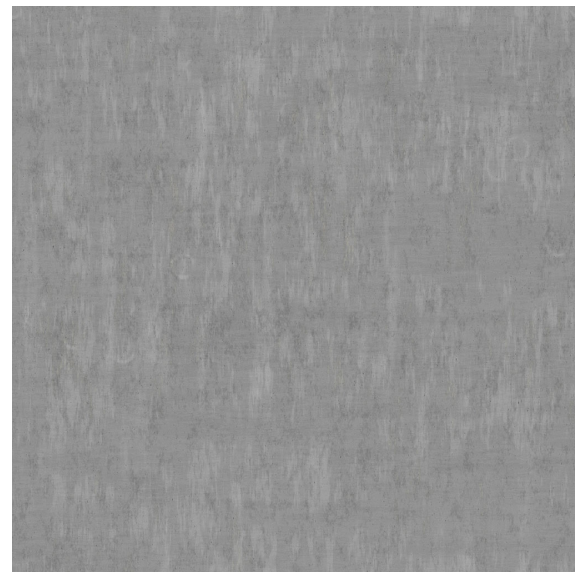
SIZING: 40MM THICK
1,800MM X 800MM FORMAT



CPT-01
CARPET TILE

CARBON NEGATIVE INTERFACE TILES.

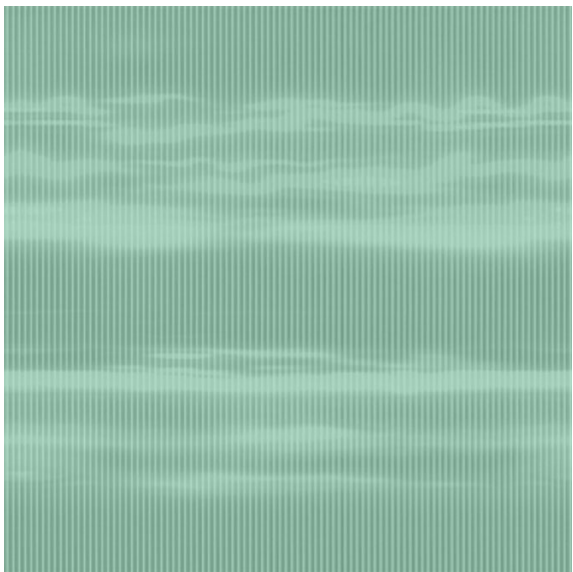
SIZING: 10MM THICK
1,800MM X 800MM FORMAT



EF-01
EXTERNAL FACADE

LOCALLY SOURCED AGGREGATE TILE POSSIBLY USING SANITARY WIPES AND CRUSHED GLASS TO ACHIEVE DESIRED LOOK.

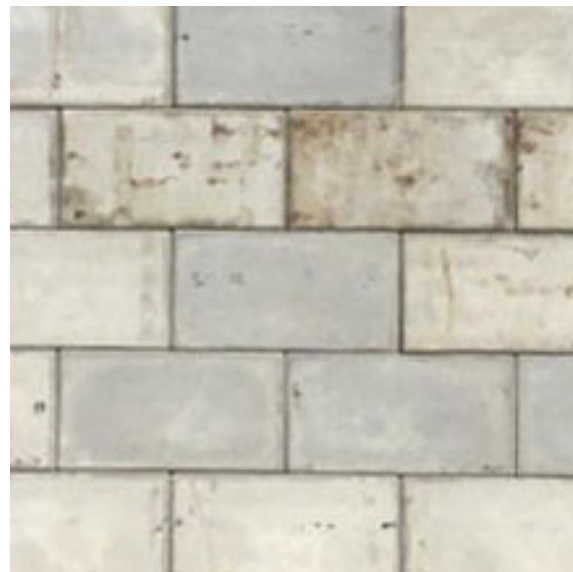
SIZING: 12MM THICK
1,800MM X 800MM FORMAT



EF-02
POLYCARBONATE GLAZING

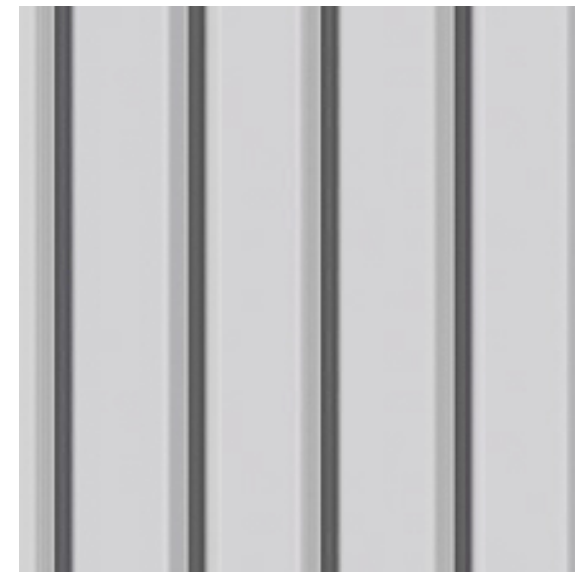
SALVAGED DANPALON POLYCARBONATE IN VARIOUS COLOURS.

SIZING: VARIES



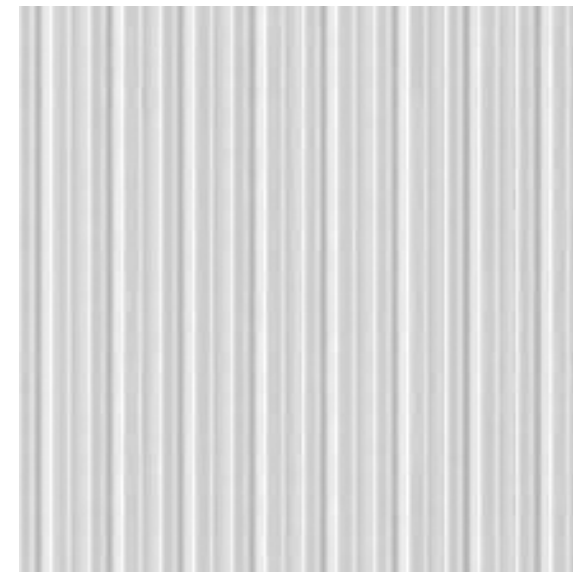
CB-01
CONCRETE BLOCKS

MADE ON-SITE WITH CRUSHED CONCRETE AGGREGATE.



RF-01
METAL SHEETING

LYSAGHT KLIPLOK METAL PROFILE



RF-02
POLYCARBONATE SHEETING

RECYCLED POLYCARBONATE SHEETS.

SIZING: VARIES



CS-01
CANOPY SHADING

PURPLE SINGLE-USE LIFTING SLINGS WOVEN TO CREATE A LARGER CANOPY COVER.

Rev	Date	Description
-----	------	-------------

Sydney Level 2, 79 Myrtle St
Chippendale 2008
Nominated Architect: Gerard Reinmuth 6629
T 02 9698 2198
F 02 9698 2353

Hobart 181 Elizabeth St
Hobart 7000
Nom. Architect TAS: Scott Balmforth CC1041T
Registered Architect VIC: Scott Balmforth 16263
T 03 6234 6372
F 03 6231 4939

TERROIR

Project:
Shoalhaven City Council
Resource Recovery Learning Centre
120 Flatrock Road, Mundamia NSW
Drawing Description:
MATERIALS BOARD

Drawn by: AN	Checked by: JL	Scale: @A1
PROJECT NO: 22204	DWG NO: DA-00-06	REV NO: 01
Drawing Status: DEVELOPMENT APPLICATION		

GENERAL NOTES

DO NOT SCALE FROM THIS DRAWING

CONFIRM ALL DIMENSIONS AND SETOUTS ON SITE PRIOR TO MANUFACTURE & INSTALLATION

ALL WORK IN ACCORDANCE WITH RELEVANT AUSTRALIAN STANDARDS

TO BE READ IN CONJUNCTION WITH ENGINEERS DOCUMENTS.

KEY PLAN

LEGEND



View 01_Entry approach from Carpark



View 02_Front of House Reception



View 03_Office Outdoor Area

Rev	Date	Description
-----	------	-------------

Sydney Level 2, 79 Myrtle St
Chippendale 2008
Nominated Architect: Gerard Reinmuth 6629
T 02 9698 2198
F 02 9698 2353

Hobart 181 Elizabeth St
Hobart 7000
Nom. Architect TAS: Scott Balmforth CC1041T
Registered Architect VIC: Scott Balmforth 16263
T 03 6234 6372
F 03 6231 4939

TERROIR

Project:
Shoalhaven City Council
Resource Recovery Learning Centre
120 Flatrock Road, Mundamia NSW
Drawing Description:
3D IMAGES

Drawn by: AN Checked by: JL Scale: @A1

PROJECT NO: 22204	DWG NO: DA-20-01	REV NO: 01
----------------------	---------------------	---------------

Drawing Status: DEVELOPMENT APPLICATION

GENERAL NOTES

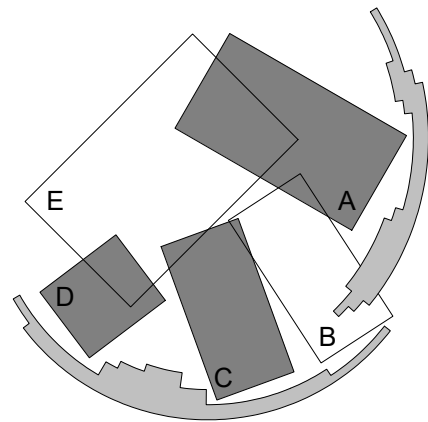
DO NOT SCALE FROM THIS DRAWING

CONFIRM ALL DIMENSIONS AND SETOUTS ON SITE PRIOR TO MANUFACTURE & INSTALLATION

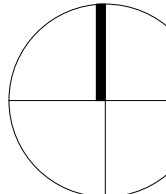
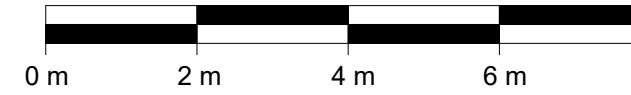
ALL WORK IN ACCORDANCE WITH RELEVANT AUSTRALIAN STANDARDS

TO BE READ IN CONJUNCTION WITH ENGINEERS DOCUMENTS.

KEY PLAN



LEGEND



00-06_MATERIAL LEGEND

CODE	DESCRIPTION
CB-01	Concrete Block
CF-01	Concrete Floor
CPT-01	Carpet Tile
CS-01	Canopy Shading
EF-01	External Façade
GW-01	Gabion Wall
RF-01	Metal Sheetting
RF-02	Polycarbonate Sheetting
SG-01	Steel Grating
TC-01	Timber Columns (Recycled)
TF-01	Timber Flooring (Recycled)

01	07/06/23	Development Application
Rev	Date	Description

Sydney Level 2, 79 Myrtle St
Chippendale 2008
Nominated Architect: Gerard Reinmuth 6629
T 02 9698 2198
F 02 9698 2353

Hobart 181 Elizabeth St
Hobart 7000
Nom. Architect TAS: Scott Balmforth CC1041T
Registered Architect VIC: Scott Balmforth 16263
T 03 6234 6372
F 03 6231 4939

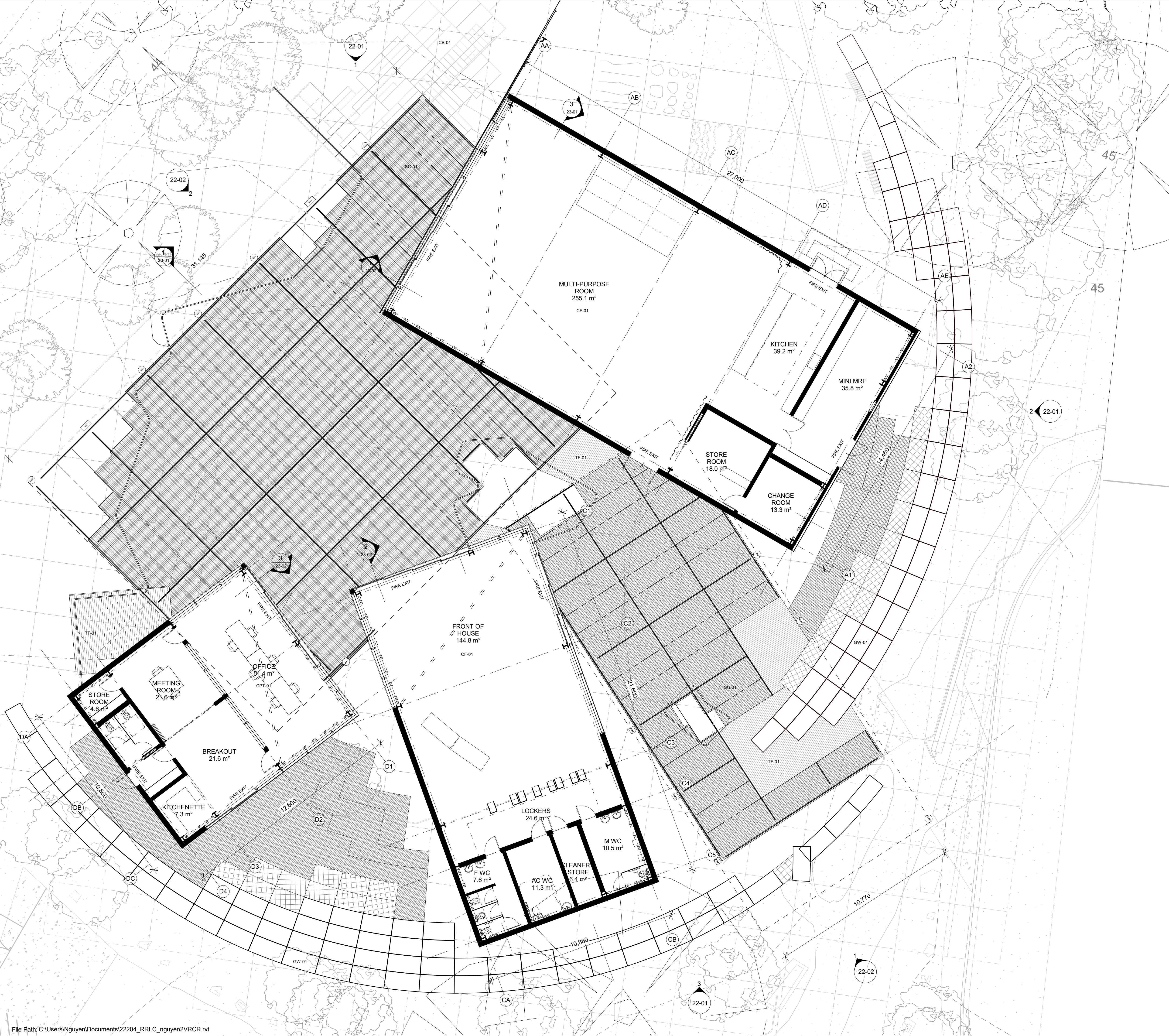
TERROIR

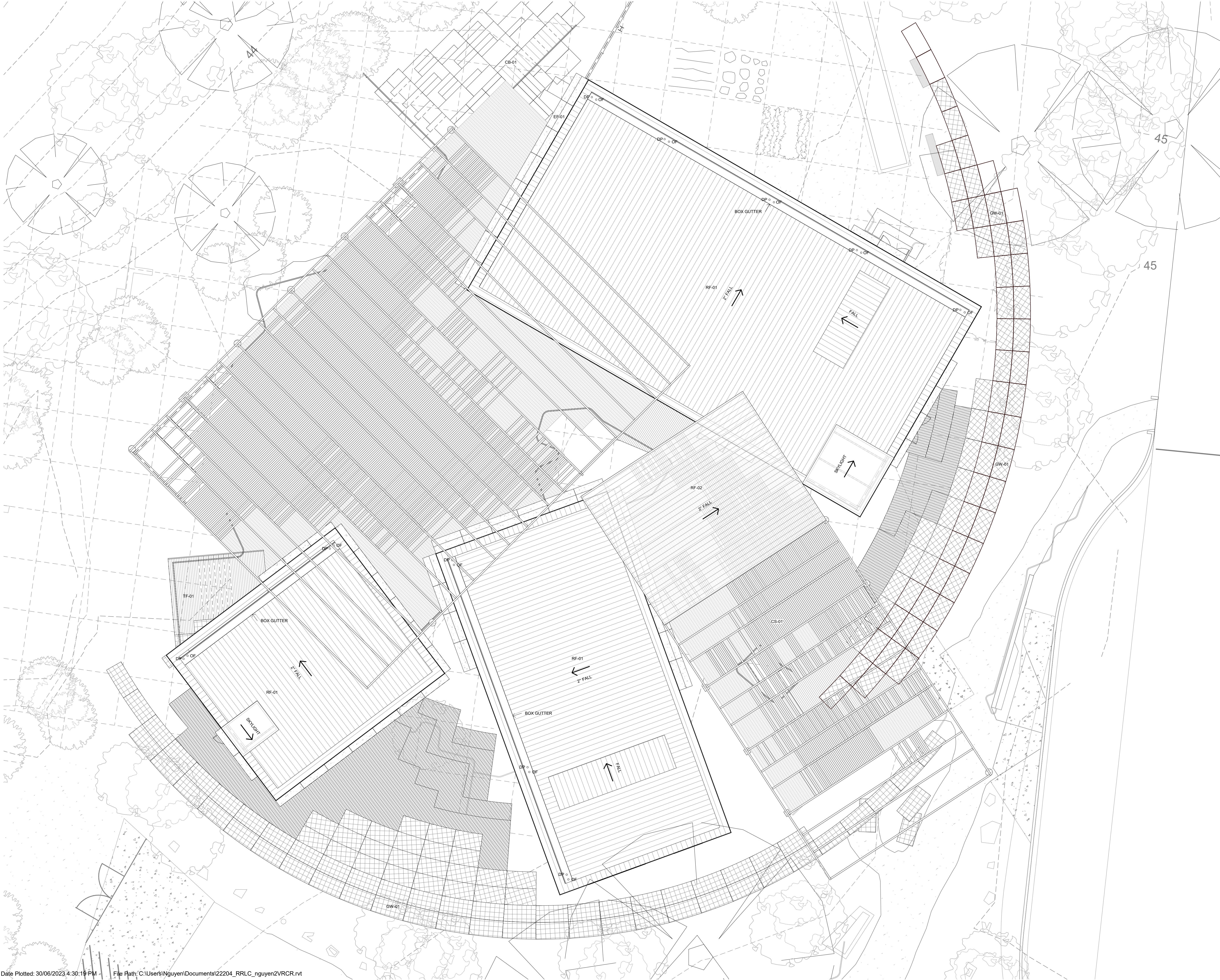
Project:
Shoalhaven City Council
Resource Recovery Learning Centre
120 Flatrock Road, Mundamia NSW
Drawing Description:
GROUND FLOOR PLAN

Drawn by: AN Checked by: JL Scale: 1:100 @ A1

PROJECT NO:	DWG NO:	REV NO:
22204	DA-21-01	01

Drawing Status: DEVELOPMENT APPLICATION





GENERAL NOTES

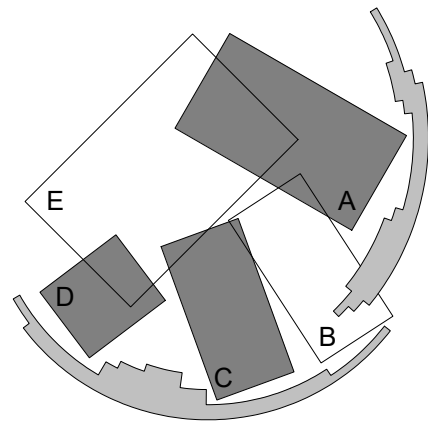
DO NOT SCALE FROM THIS DRAWING

CONFIRM ALL DIMENSIONS AND SETOUTS ON SITE PRIOR TO MANUFACTURE & INSTALLATION

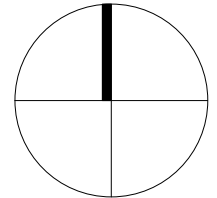
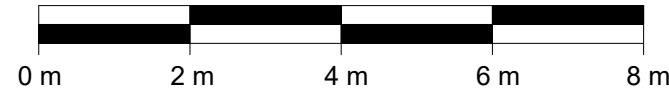
ALL WORK IN ACCORDANCE WITH RELEVANT AUSTRALIAN STANDARDS

TO BE READ IN CONJUNCTION WITH ENGINEERS DOCUMENTS.

KEY PLAN



LEGEND



00-06_MATERIAL LEGEND	
CODE	DESCRIPTION
CB-01	Concrete Block
CF-01	Concrete Floor
CPT-01	Carpet Tile
CS-01	Canopy Shading
EF-01	External Façade
GW-01	Gabion Wall
RF-01	Metal Sheetting
RF-02	Polycarbonate Sheetting
SG-01	Steel Grating
TC-01	Timber Columns (Recycled)
TF-01	Timber Flooring (Recycled)

01	07/06/23	Development Application
Rev	Date	Description

Sydney Level 2, 79 Myrtle St
Chippendale 2008
Nominated Architect: Gerard Reinmuth 6629
T 02 9698 2198
F 02 9698 2353

Hobart 181 Elizabeth St
Hobart 7000
Nom. Architect TAS: Scott Balmforth CC1041T
Registered Architect VIC: Scott Balmforth 16263
T 03 6234 6372
F 03 6231 4939

TERROIR

Project:
Shoalhaven City Council
Resource Recovery Learning Centre
120 Flatrock Road, Mundamia NSW

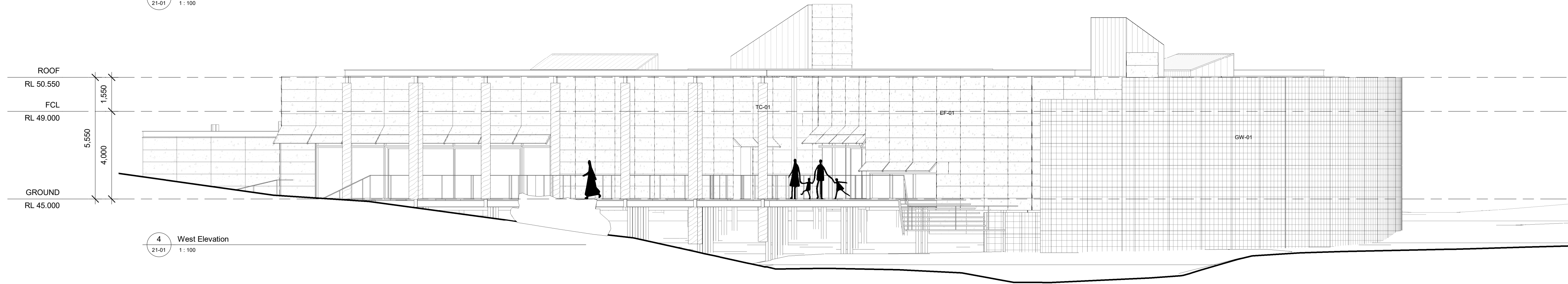
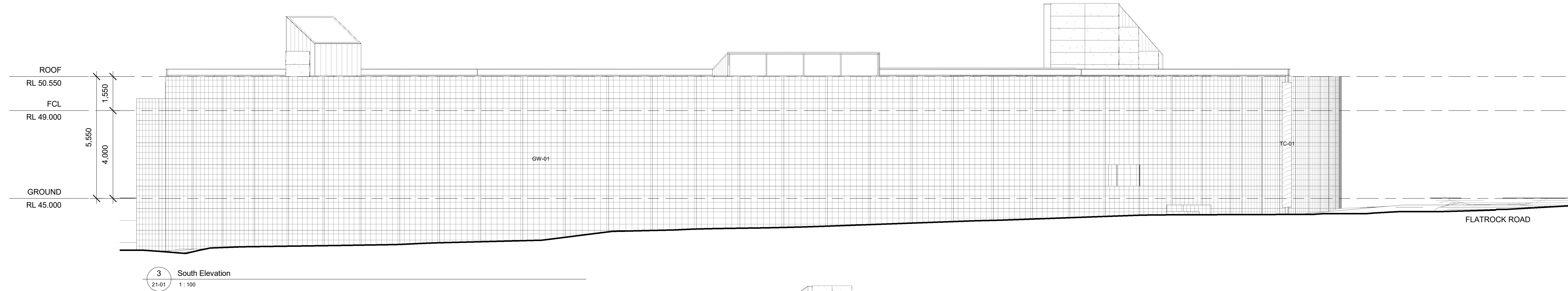
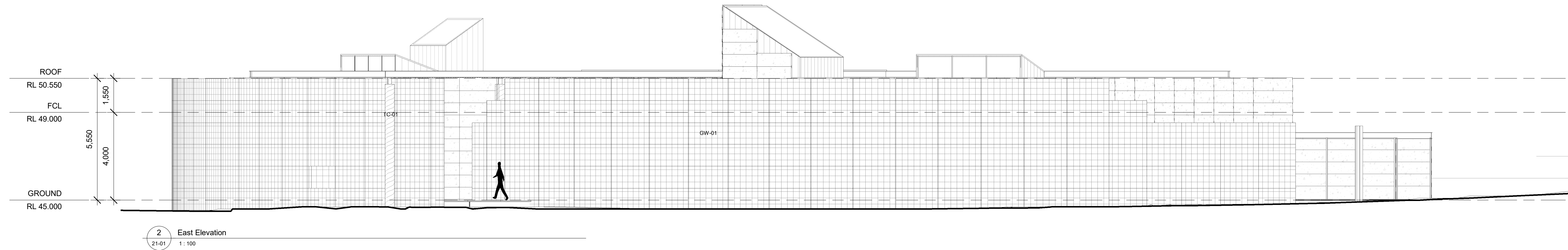
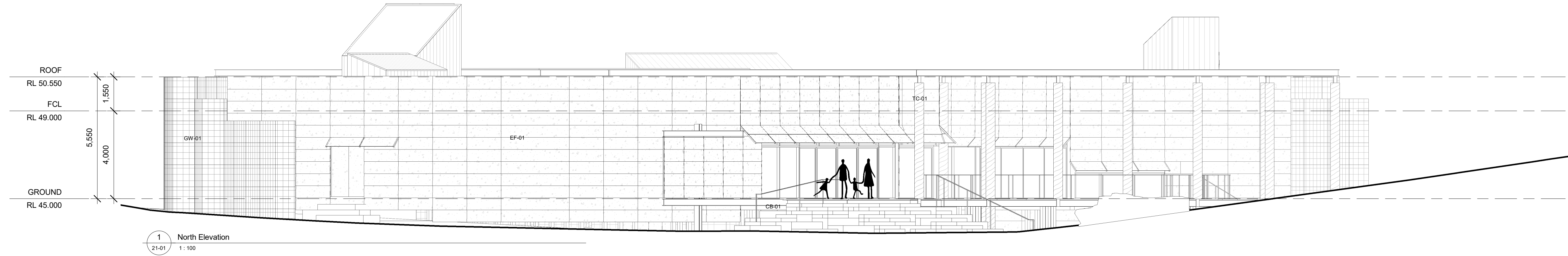
Drawing Description:

ROOF PLAN

Drawn by: AN Checked by: JL Scale: 1:100 @ A1

PROJECT NO:	DWG NO:	REV NO:
22204	DA-21-02	01

Drawing Status: DEVELOPMENT APPLICATION



GENERAL NOTES

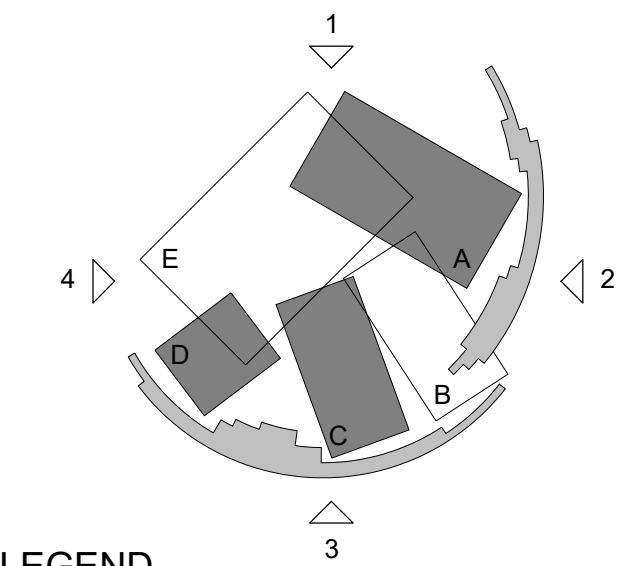
DO NOT SCALE FROM THIS DRAWING

CONFIRM ALL DIMENSIONS AND SETOUTS ON SITE PRIOR TO MANUFACTURE & INSTALLATION

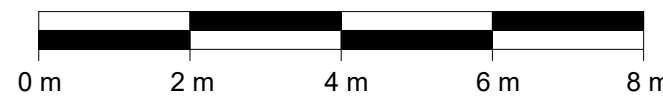
ALL WORK IN ACCORDANCE WITH RELEVANT AUSTRALIAN STANDARDS

TO BE READ IN CONJUNCTION WITH ENGINEERS DOCUMENTS.

KEY PLAN



LEGEND



00-06_MATERIAL LEGEND	
CODE	DESCRIPTION
CB-01	Concrete Block
CF-01	Concrete Floor
CPT-01	Carpet Tile
CS-01	Canopy Shading
EF-01	External Façade
GW-01	Gabion Wall
RF-01	Metal Sheetting
RF-02	Polycarbonate Sheetting
SG-01	Steel Grating
TC-01	Timber Columns (Recycled)
TF-01	Timber Flooring (Recycled)

Rev	Date	Description
-----	------	-------------

Sydney Level 2, 79 Myrtle St
Chippendale 2008
Nominated Architect: Gerard Reinmuth 6629
T 02 9698 2198
F 02 9698 2353

Hobart 181 Elizabeth St
Hobart 7000
Nom. Architect TAS: Scott Balmforth CC1041T
Registered Architect VIC: Scott Balmforth 16263
T 03 6234 6372
F 03 6231 4939

TERROIR

Project:
Shoalhaven City Council
Resource Recovery Learning Centre
120 Flatrock Road, Mundamia NSW

Drawing Description:

BUILDING ELEVATIONS

Drawn by: AN Checked by: JL Scale: 1:100 @ A1

PROJECT NO: 22204	DWG NO: DA-22-01	REV NO: 01
----------------------	---------------------	---------------

Drawing Status: DEVELOPMENT APPLICATION

GENERAL NOTES

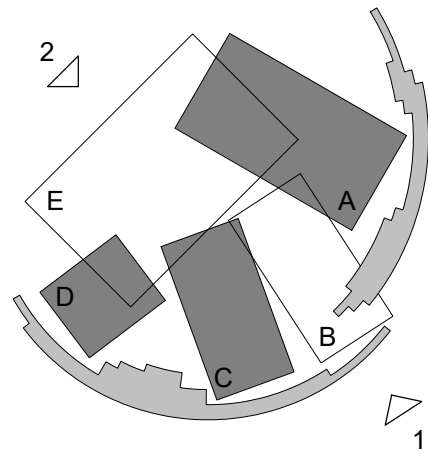
DO NOT SCALE FROM THIS DRAWING

CONFIRM ALL DIMENSIONS AND SETOUTS ON SITE PRIOR TO MANUFACTURE & INSTALLATION

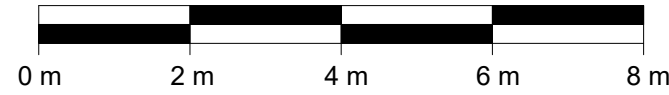
ALL WORK IN ACCORDANCE WITH RELEVANT AUSTRALIAN STANDARDS

TO BE READ IN CONJUNCTION WITH ENGINEERS DOCUMENTS.

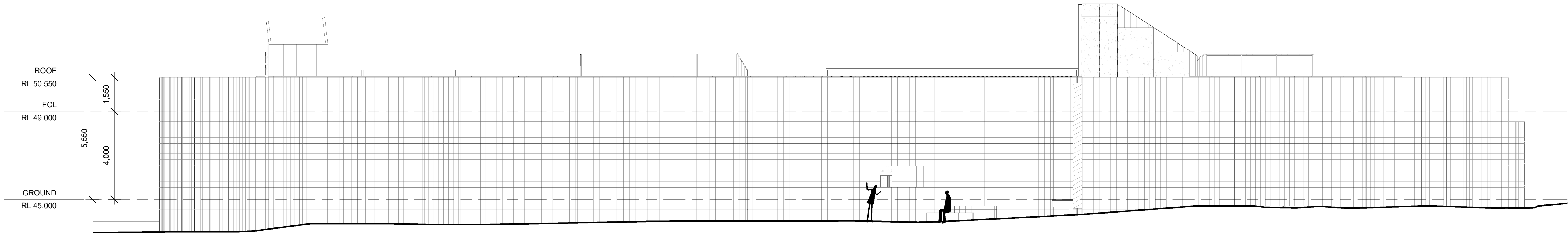
KEY PLAN



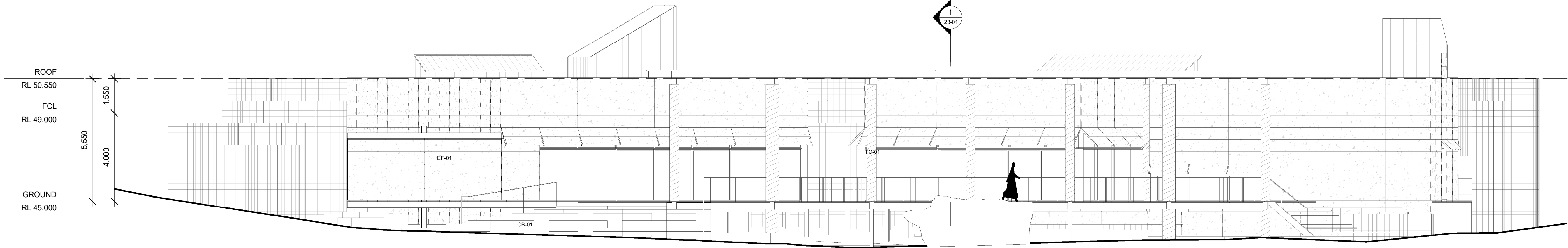
LEGEND



00-06_MATERIAL LEGEND	
CODE	DESCRIPTION
CB-01	Concrete Block
CF-01	Concrete Floor
CPT-01	Carpet Tile
CS-01	Canopy Shading
EF-01	External Façade
GW-01	Gabion Wall
RF-01	Metal Sheetting
RF-02	Polycarbonate Sheetting
SG-01	Steel Grating
TC-01	Timber Columns (Recycled)
TF-01	Timber Flooring (Recycled)



1 B_Entry Deck
21-01 1:100



2 E_Outdoor Deck
21-01 1:100

01	07/06/23	Development Application
Rev	Date	Description

Sydney Level 2, 79 Myrtle St
Chippendale 2008
Nominated Architect: Gerard Reinmuth 6629
T 02 9698 2198
F 02 9698 2353

Hobart 181 Elizabeth St
Hobart 7000
Nom. Architect TAS: Scott Balmforth CC1041T
Registered Architect VIC: Scott Balmforth 16263
T 03 6234 6372
F 03 6231 4939

TERROIR

Project:
Shoalhaven City Council
Resource Recovery Learning Centre
120 Flatrock Road, Mundamia NSW

Drawing Description:
BUILDING ELEVATIONS

Drawn by: AN Checked by: JL Scale: 1:100 @ A1

PROJECT NO:	DWG NO:	REV NO:
22204	DA-22-02	01

Drawing Status: DEVELOPMENT APPLICATION

GENERAL NOTES

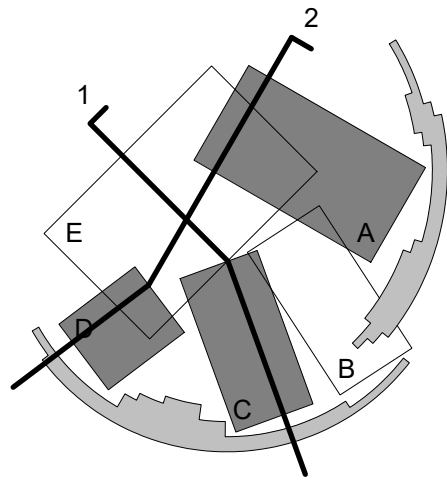
DO NOT SCALE FROM THIS DRAWING

CONFIRM ALL DIMENSIONS AND SETOUTS ON SITE PRIOR TO MANUFACTURE & INSTALLATION

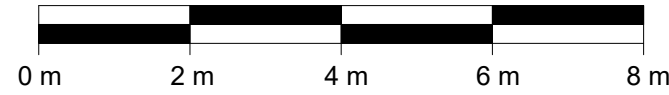
ALL WORK IN ACCORDANCE WITH RELEVANT AUSTRALIAN STANDARDS

TO BE READ IN CONJUNCTION WITH ENGINEERS DOCUMENTS.

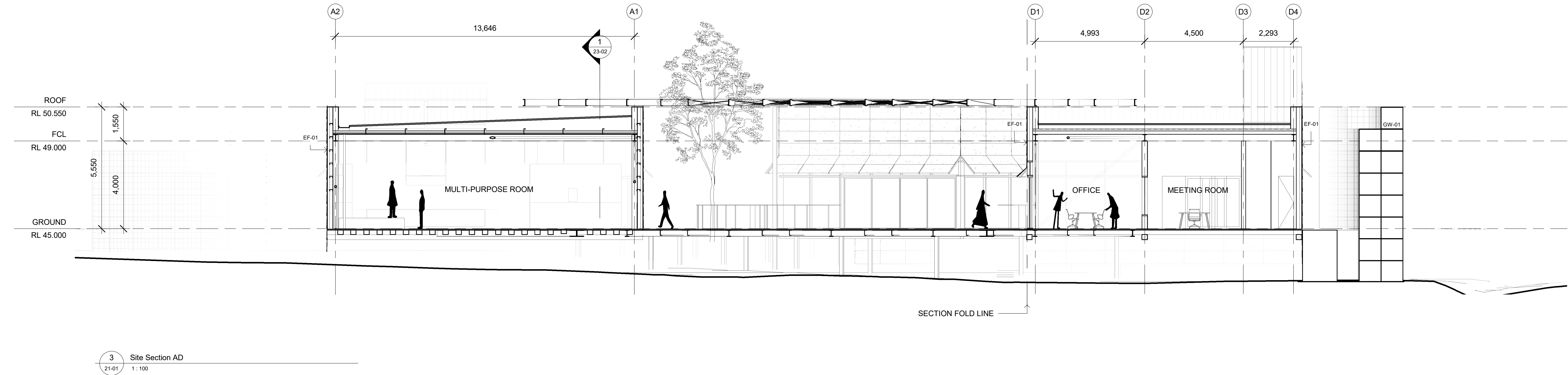
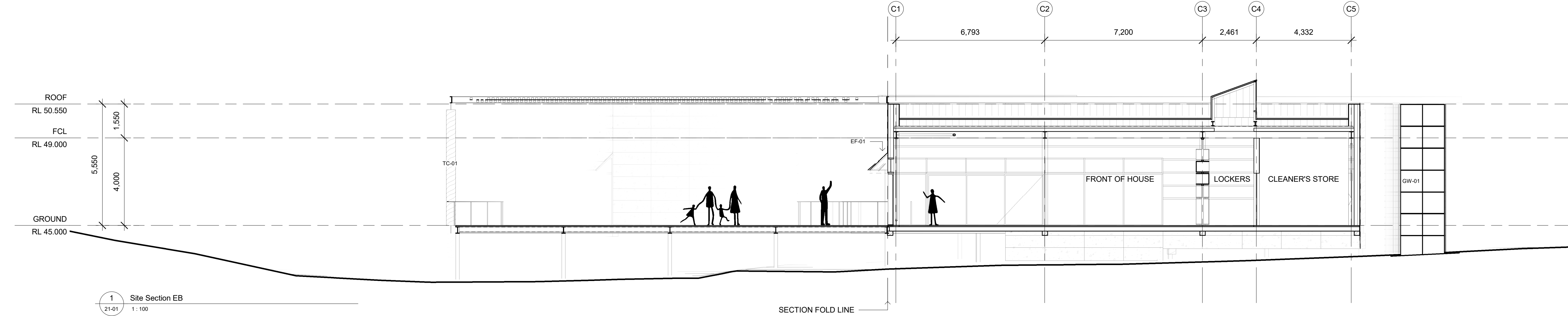
KEY PLAN



LEGEND



00-06_MATERIAL LEGEND	
CODE	DESCRIPTION
CB-01	Concrete Block
CF-01	Concrete Floor
CPT-01	Carpet Tile
CS-01	Canopy Shading
EF-01	External Façade
GW-01	Gabion Wall
RF-01	Metal Sheetting
RF-02	Polycarbonate Sheetting
SG-01	Steel Grating
TC-01	Timber Columns (Recycled)
TF-01	Timber Flooring (Recycled)



01	07/06/23	Development Application
Rev	Date	Description

Sydney Level 2, 79 Myrtle St
Chippendale 2008
Nominated Architect: Gerard Reinmuth 6629
T 02 9698 2198
F 02 9698 2353

Hobart 181 Elizabeth St
Hobart 7000
Nom. Architect TAS: Scott Balmforth CC1041T
Registered Architect VIC: Scott Balmforth 16263
T 03 6234 6372
F 03 6231 4939

TERROIR

Project:
Shoalhaven City Council
Resource Recovery Learning Centre
120 Flatrock Road, Mundamia NSW

Drawing Description:

SITE SECTIONS

Drawn by: AN Checked by: JL Scale: 1:100 @ A1

PROJECT NO:	DWG NO:	REV NO:
22204	DA-23-01	01

Drawing Status: DEVELOPMENT APPLICATION

GENERAL NOTES

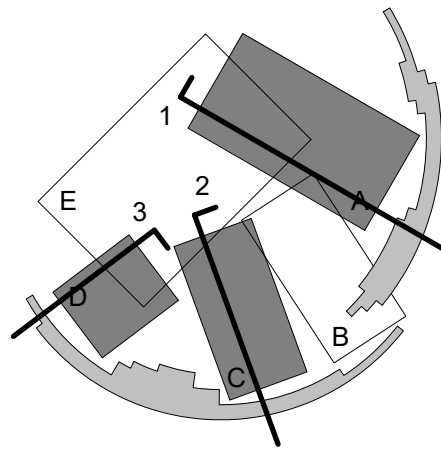
DO NOT SCALE FROM THIS DRAWING

CONFIRM ALL DIMENSIONS AND SETOUTS ON SITE PRIOR TO MANUFACTURE & INSTALLATION

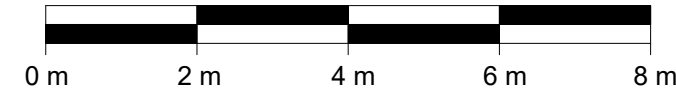
ALL WORK IN ACCORDANCE WITH RELEVANT AUSTRALIAN STANDARDS

TO BE READ IN CONJUNCTION WITH ENGINEERS DOCUMENTS.

KEY PLAN



LEGEND



00-06_MATERIAL LEGEND	
CODE	DESCRIPTION

CB-01	Concrete Block
CF-01	Concrete Floor
CPT-01	Carpet Tile
CS-01	Canopy Shading
EF-01	External Façade
GW-01	Gabion Wall
RF-01	Metal Sheetting
RF-02	Polycarbonate Sheetting
SG-01	Steel Grating
TC-01	Timber Columns (Recycled)
TF-01	Timber Flooring (Recycled)

01	07/06/23	Development Application
Rev	Date	Description

Sydney Level 2, 79 Myrtle St
Chippendale 2008
Nominated Architect: Gerard Reinmuth 6629
T 02 9698 2198
F 02 9698 2353

Hobart 181 Elizabeth St
Hobart 7000
Nom. Architect TAS: Scott Balmforth CC1041T
Registered Architect VIC: Scott Balmforth 16263
T 03 6234 6372
F 03 6231 4939

TERROIR

Project:
Shoalhaven City Council
Resource Recovery Learning Centre
120 Flatrock Road, Mundamia NSW

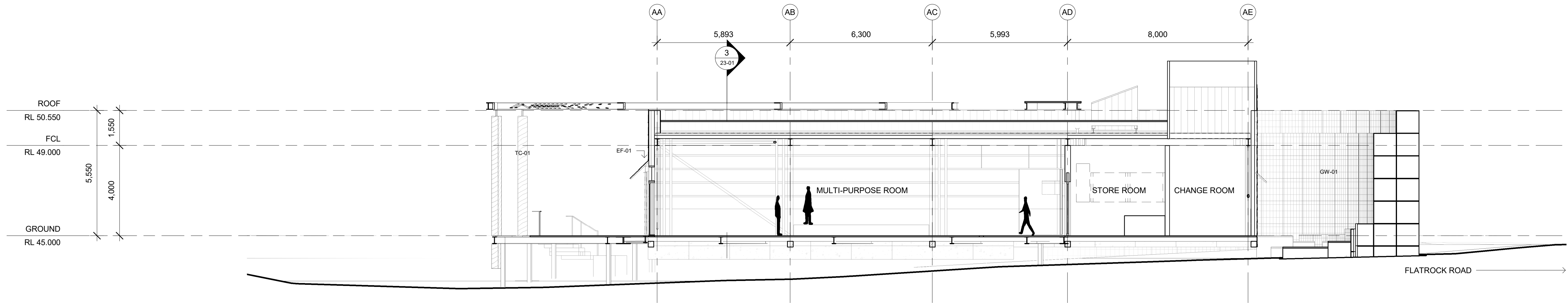
Drawing Description:

BUILDING SECTIONS

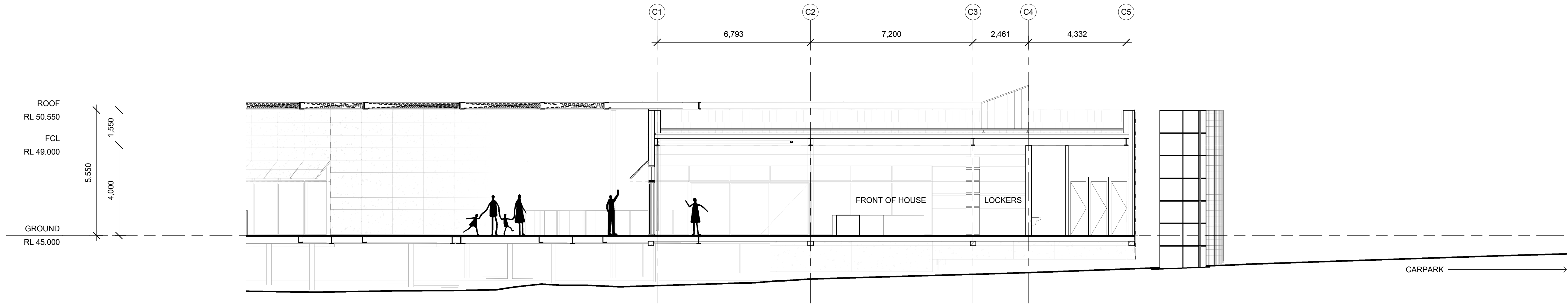
Drawn by: AN Checked by: JL Scale: 1:100 @ A1

PROJECT NO:	DWG NO:	REV NO:
22204	DA-23-02	01

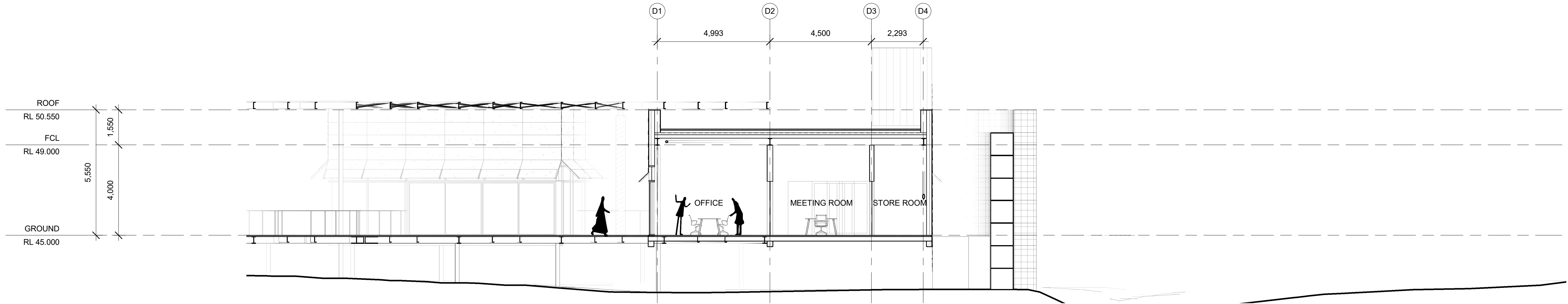
Drawing Status: DEVELOPMENT APPLICATION



1 A_Multi-Use - Long
21-01 1:100



2 C_Front of House - Long
21-01 1:100



3 D_Office - Long
21-01 1:100